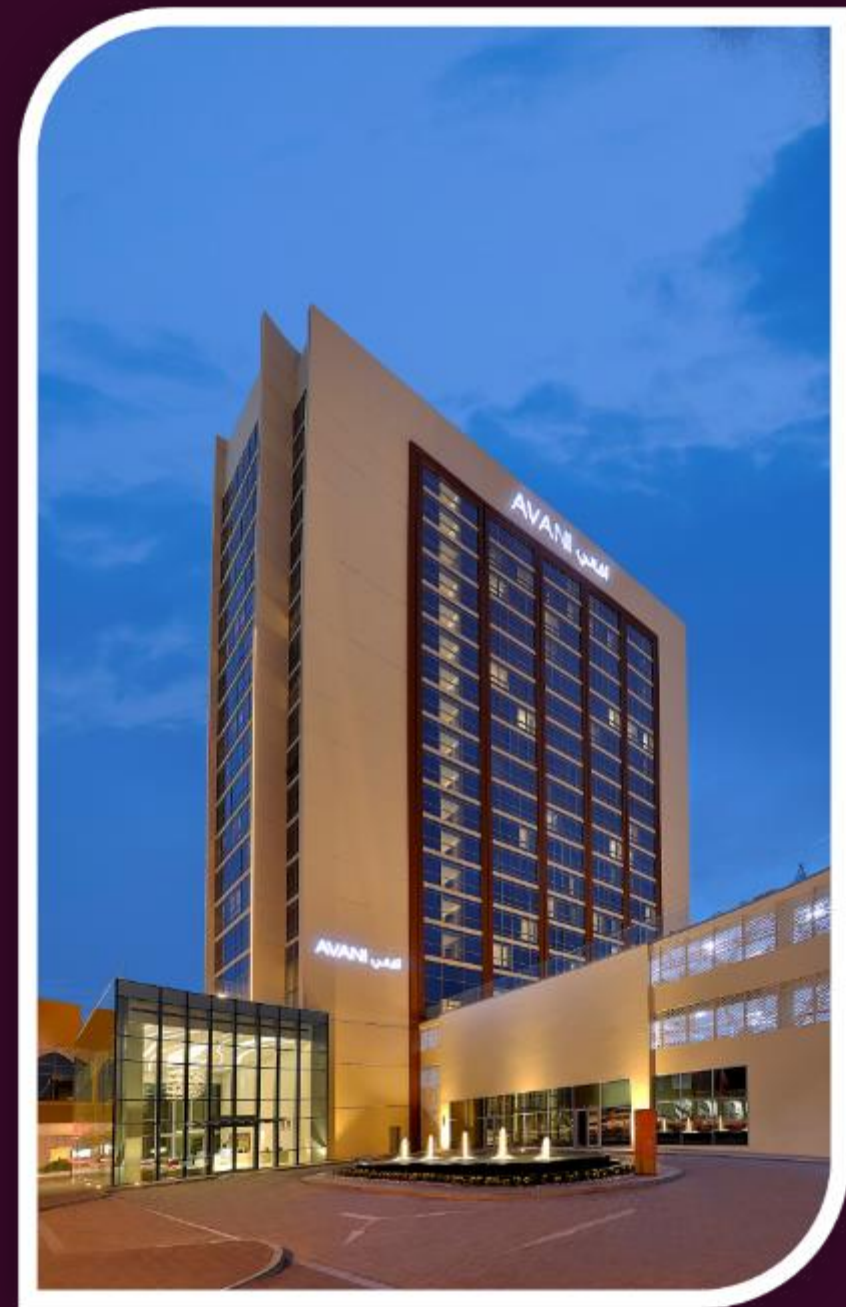


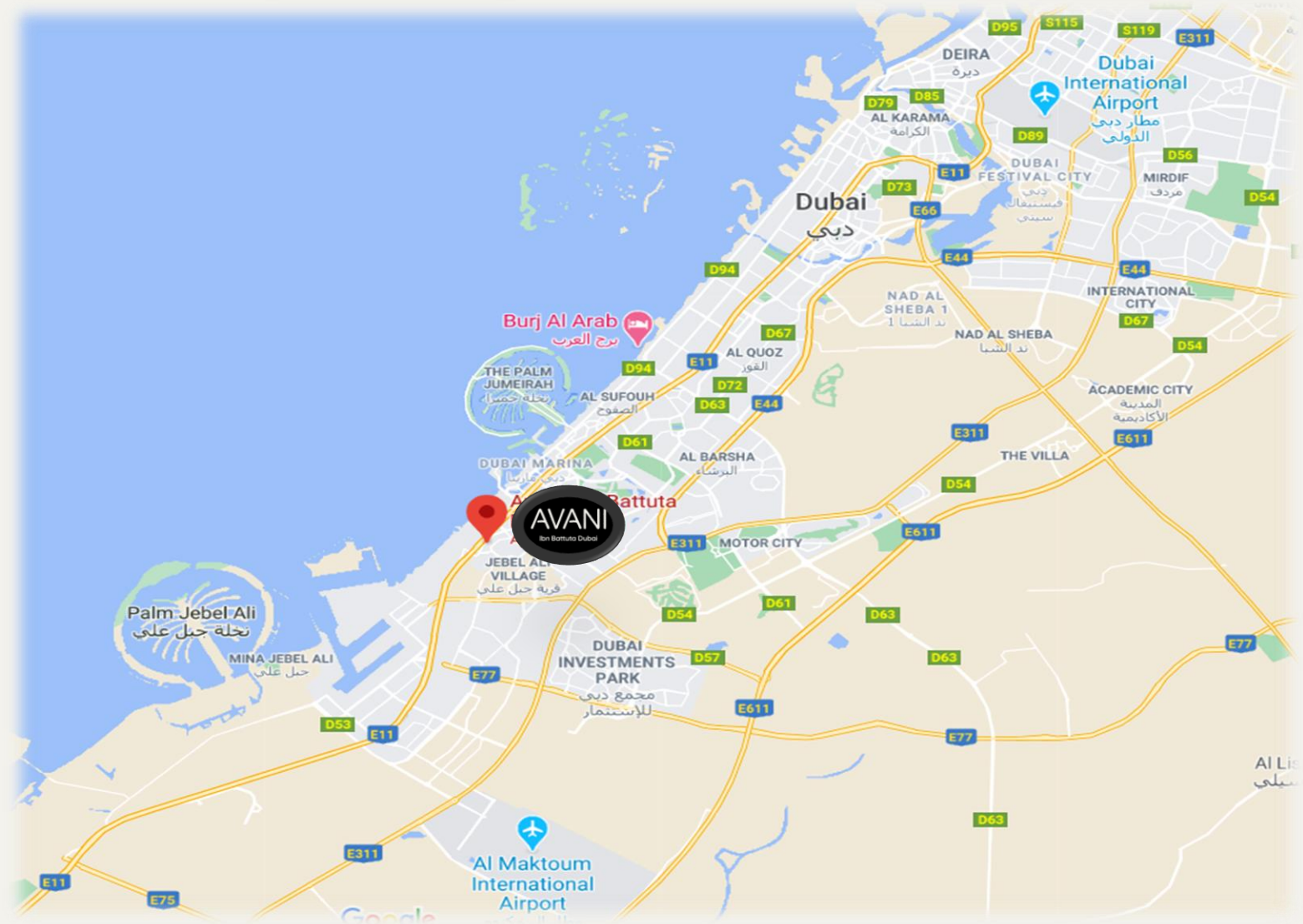
AVANI

Ibn Battuta Dubai



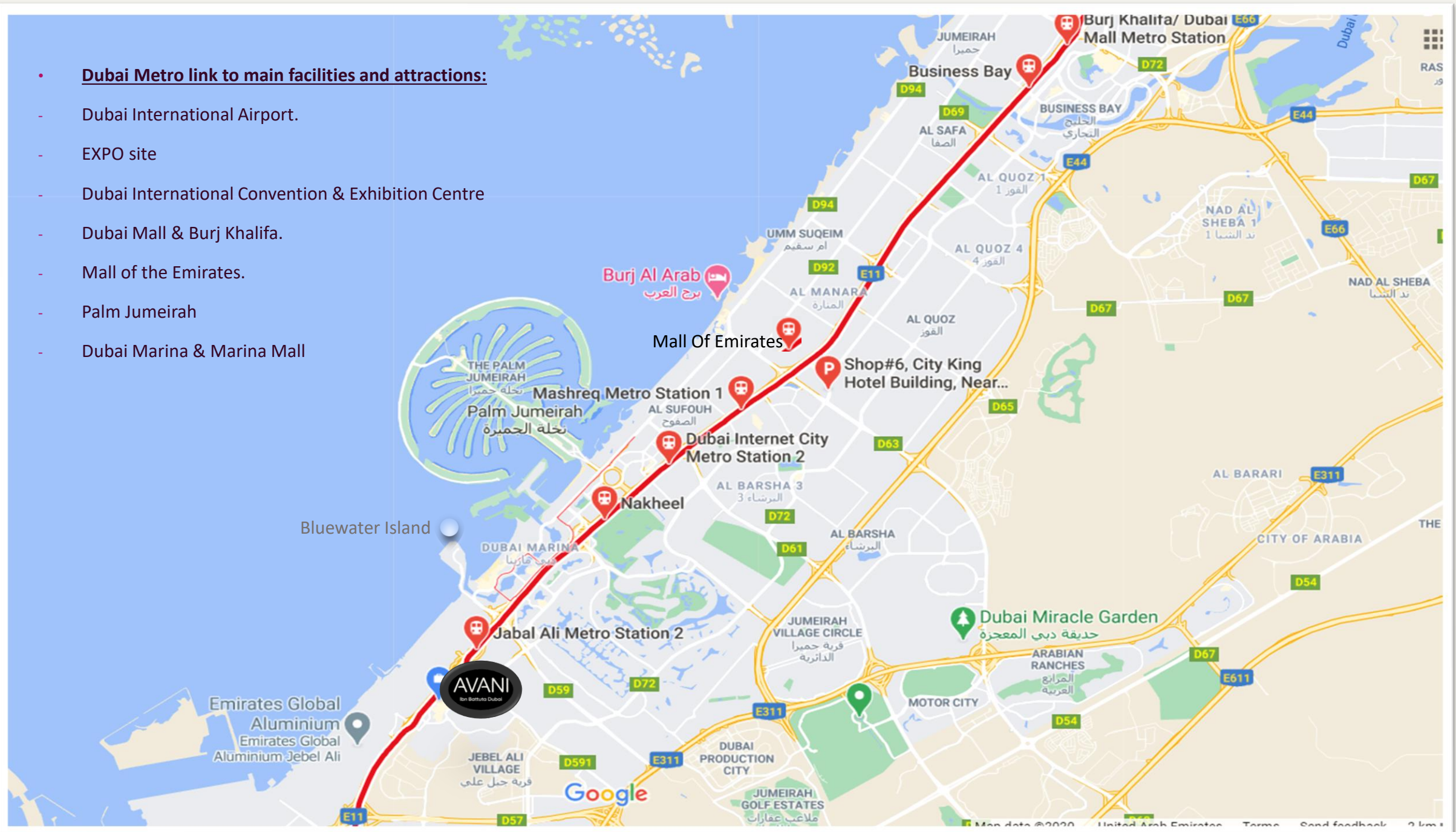
Avani Ibn Battuta Dubai - Location

- Located on Sheikh Zayed Road.
- Attached to Ibn Battuta Mall & Ibn Battuta Metro station.
- EXPO 2021 – 25 minutes drive from EXPO Site
- 30 minutes drive from Al Maktoum International Airport – DWC.
- 25 minutes drive from Dubai International Airport – DXB.
- 15 minutes drive to Jebel Ali Free Zone.
- 10 minutes drive to Dubai Marina, Jumeirah Beach & Blue Waters Dubai Eye.
- 15 minutes drive to The Palm Jumeirah.
- 20 minutes drive away to Dubai Mall & Burj Khalifa.



• Dubai Metro link to main facilities and attractions:

- Dubai International Airport.
- EXPO site
- Dubai International Convention & Exhibition Centre
- Dubai Mall & Burj Khalifa.
- Mall of the Emirates.
- Palm Jumeirah
- Dubai Marina & Marina Mall



Avani Ibn Battuta Dubai - Facilities



- **360 Rooms & Suites**
- **Meeting Room**
- **Avani FIT Gym**
- **Swimming Pool**
- **Food & Beverage outlets:**
 - **The Pantry by Avani – Lobby Café**
 - **Flavours Restaurant & Lounge – All Day Dining**
 - **Missippi's Pool Bar and Social Hub**
- **Daily Complementary Shuttle Bus – JBR (public) Beach**



Avani Ibn Battuta Dubai - Accommodation

- **Total Inventory** **360 Rooms**
- **Room Types:**
 - **Avani Superior** **31 sq. m**
 - **Avani Suite** **45 sq. m**
- **Avani Superior**
 - **251 King bedded rooms**
 - **94 Twin bedded rooms**
- **Avani Suite**
 - **15 King bedded Suite rooms**



Avani Ibn Battuta Dubai – Avani Superior



- King or twin beds
- Double bed sized 180x200 cm / Twin bed sized 120x200 cm
- Rain shower
- Mini bar
- Tea and coffee making facilities
- Electronic safe

- 49" Smart LED TV with satellite channels
- Work desk
- Complimentary in-room WiFi
- Individually controlled air conditioning
- Connecting rooms available with inter-connecting door or corner connecting hallway.

Avani Ibn Battuta Dubai – Avani Superior



Avani Ibn Battuta Dubai – Avani Suite

- 15 King bedded suites sized 45 sq. m
- Double bed sized 200x200 cm
- Rain shower
- Freestanding bathtub
- Electronic safe
- Working desk
- Mini bar
- Tea and coffee making facilities
- Dining table
- Espresso machine & complimentary coffee capsules
- 49" Smart LED TV with satellite channels in bedroom
- 49" Smart LED TV with satellite channels in living room
- Complimentary in-room WiFi
- Individually controlled air conditioning
- Available with hallway connected Twin room.



Avani Ibn Battuta Dubai – The Pantry

- Deli & Café
- 24 hour Coffee shop (Healthy Salad, Sandwiches, Snacks & Juices)



Avani Ibn Battuta Dubai – Flavours Restaurant

- All day dining – Breakfast, Lunch & Dinner.
- Dining option from light bites to grand buffets.
- Indoor & Outdoor seating options.



Meal Plan

- **HB** – Lunch or dinner serving with local water only.
- **HB+** – Lunch or dinner serving with 2 glass of house wine or beer.
- **All inclusive** – from 12 till 10 in the unlimited alcoholic house beverages and soft drinks.



MISSISSIPPI'S

POOL BAR & SOCIAL HUB

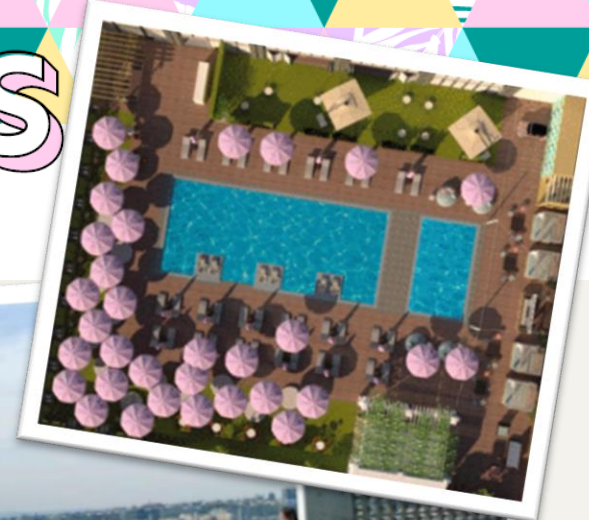
Picture the colorful cafes of Bali...
Throw in a touch of Tulum's tropics ...
And add the artistry of Melbourne..

You have discovered a fun and accessible
vibrant urban oasis!

Sneak up to the soaked pool deck of the
Avani Ibn Battuta to see Mississippi's

Let her cook your home-made favorites,
while sipping on anything from coffee to
cocktails or even one of your signature
slushes.

DRINK,
DINE,
DIP OR
DANCE.

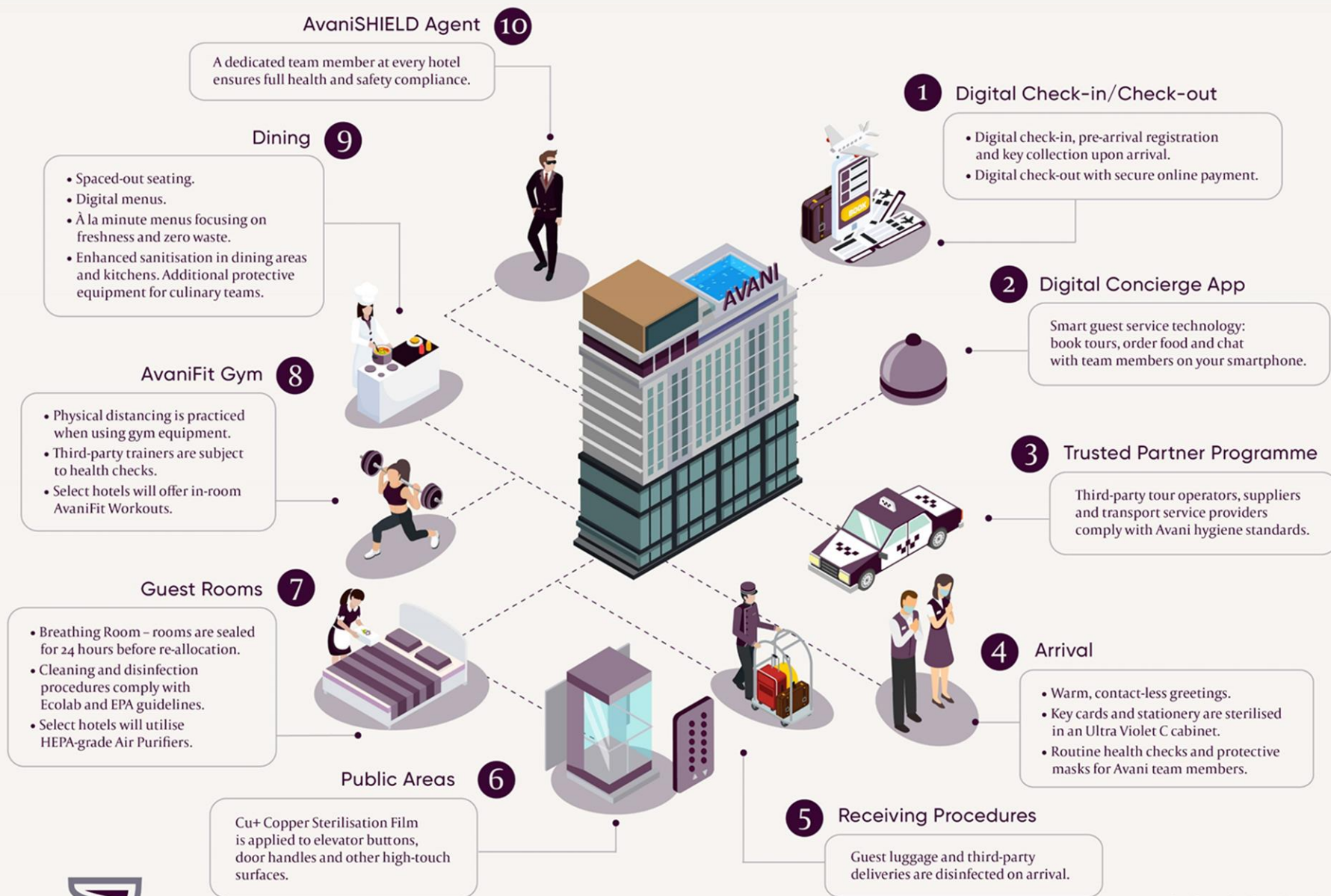




AVANISHIELD

Safety & Hygiene programme for safe travel





AVANI

Ibn Battuta Dubai

Thank You

