

LIVE LIFE TO THE FULLEST



HOTEL OVERVIEW

356 ROOMS & SUITES

4 F&B VENUES

1 AMAZING ROOM & 5 STUDIOS

V GYM

OUTDOOR POOL

PETS ARE WELCOME





ROOMS & SUITES

ROOMS & SUITES

TAKE YOUR PICK

63 DELUXE ROOMS – 44sqm

209 DELUXE ROOMS CANAL VIEW – 44sqm

8 VERY DELUXE ROOM – 68sqm

22 VANTAGE SUITES – 71sqm

2 DELUXE SUITES – 86-97sqm

16 VALOR SUITES – 117 sqm

14 V SUITES – 125sqm

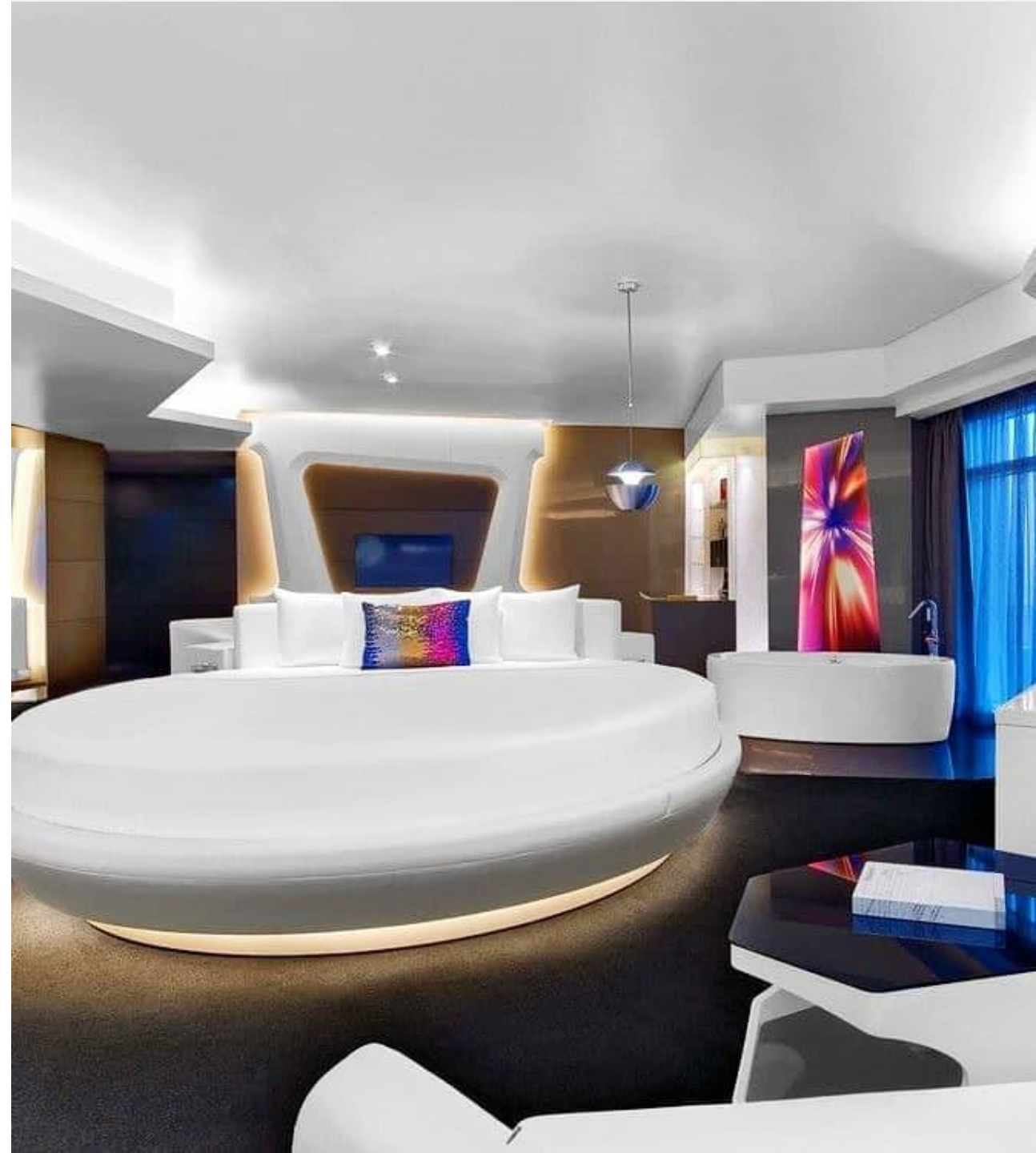
16 GRAND DELUXE SUITES – 156sqm

2 MEGA SUITES – 170sqm

2 VIBRANT SUITES – 215sqm

1 PENTHOUSE SUITE – 449sqm

1 SKY VILLA SUITE – 690sqm (2-bedroom duplex suite)







GASTRONOMY

GASTRONOMY

INDULGE IN A SELECTION OF
4 RESTAURANTS & LOUNGES

LEVEL SEVEN

Mediterranean. Market. Fresh.

NAMU

Taste the best of the Korean cuisine with the best
sunset in town.

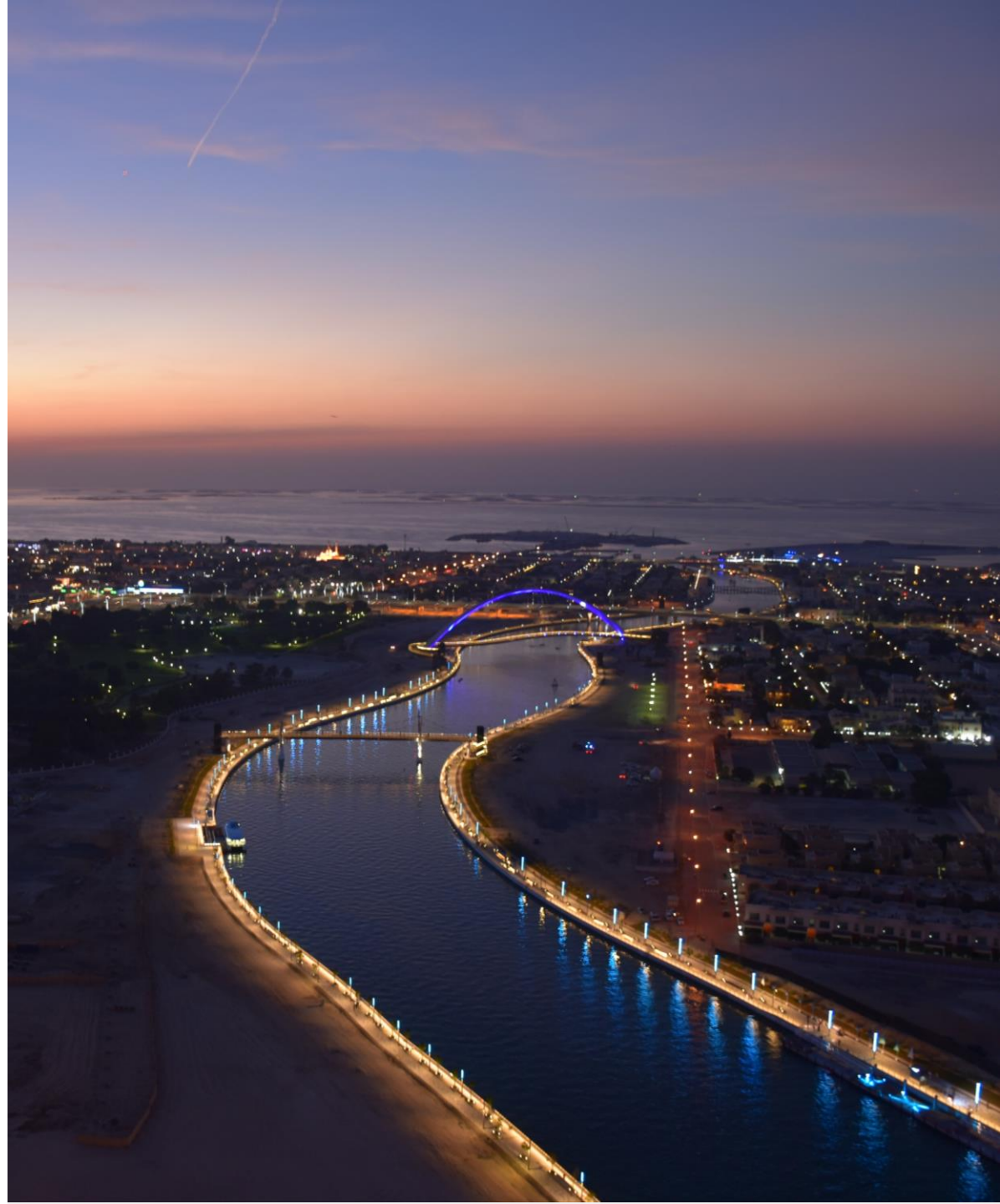
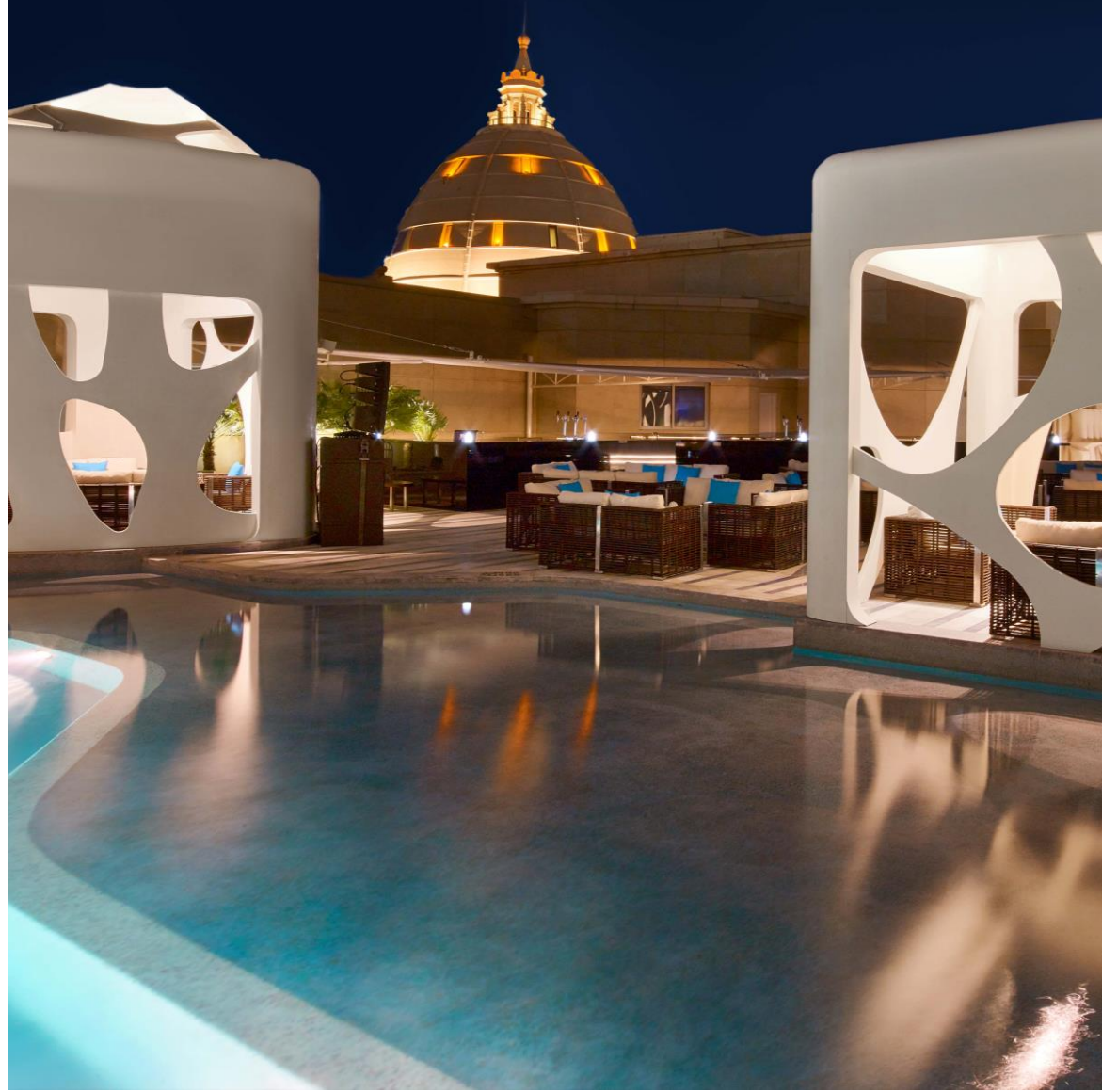
V LOUNGE

Mix, mingle and dance to the hottest beats with
panoramic views over the Dubai Water Canal.

V DECK

Poolside play – cocktails, music and bites.







INCREDIBLE EVENTS

INCREDIBLE EVENTS

TURN UP YOUR NEXT EVENT

Close to 1,300 sqm of event space

725-sqm Amazing Room

5 Studios

Connected Business Centre





MEETINGS & EVENTS

ROOM NAME	FLOOR	DIM-LXW	AREA	HEIGHT (METRES)	BANQUET	THEATRE	COCKTAIL	CLASS	U-SHAPE	CABARET (6 SEATS)	BOARD
Amazing Room	4	31.6 x 23	725	10.4	250	500	500	240	80	150	80
Pre-Function	4	17 x 16	270	3.3	-	-	150	-	-	-	-
Bridal Suite	4	-	-	3.9	-	-	-	-	-	-	-
Studio 1	5	10 (dia.)	90	3.9	40	50	75	36	20	30	22
Studio 2	5	9.5 x 7.5	70	3.9	30	35	55	24	18	18	18
Studio 3	5	8.4 x 7.4	60	3.9	20	30	40	18	18	18	20
Studio 4	5	5.5 x 6.2	35	3.9	-	-	-	-	-	-	16
Studio 5	5	8 x 5.4	45	3.9							Lounge Seating 14





LIVE IT UP

LIVE IT UP

THE BEST LEISURE FACILITIES AT
AL HABTOOR CITY

GASTRONOMY

22 Restaurants, Lounges and Nightclubs across Al Habtoor City

WELLNESS

Gym

Habtoor Tennis Academy with outdoor and indoor courts

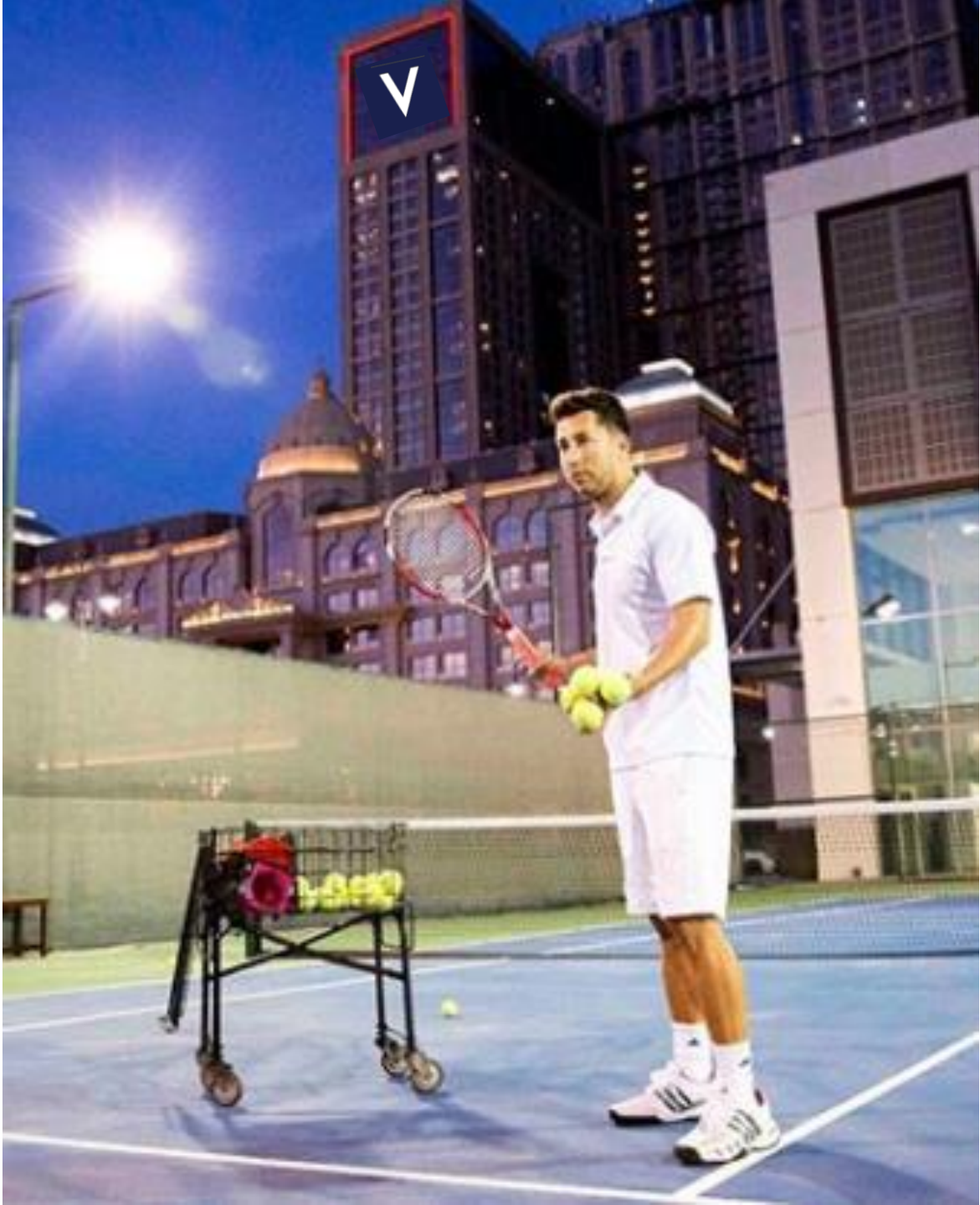
Run by the Dubai Water Canal

Easy access to a professional 8km cycling track

ENTERTAINMENT

La Perle water theatre show







EXPLORE DUBAI



EXPLORE DUBAI

LOCAL ATTRACTIONS

Burj Khalifa – 10 minutes

Dubai Fountains – 10 minutes

Palm Jumeirah – 20 minutes

Dubai Marina – 20 minutes

SHOPPING

Dubai Mall – 10 minutes

Mall of Emirates – 15 minutes

BUSINESS

Financial District – 15 minutes

World Trade Centre – 15 minutes

OTHER ATTRACTIONS

Skydive Dubai – 20 minutes

Desert – 20 minutes

Waterpark – 15 minutes

Ski Dubai – 15 minutes





THANK YOU

