

GRANDES ALPES



COURCHEVEL 1850

THE ESSENTIALS

Experience a new way of life in the oldest
and most exclusive boutique hotel in Courchevel 1850

GRANDES ALPES

★★★★★
COURCHEVEL 1850

Because life is made up
of precious moments



Experience a new way of life in the oldest and most exclusive boutique hotel in Courchevel 1850, where you feel immediately "at home" and share our philosophy of true luxury: a blend of intimacy and space, service and discretion, serenity and celebration, shopping and skiing, family momentum and time for yourself.

For a weekend or several weeks, we offer you an exceptional and enchanting retreat in the French Alps. Discover our original "haute couture" interior design and bespoke services, share the ultimate luxury with family and friends. Be in the heart of the resort, with immediate access to the most attractive brands right below the hotel, ski directly from one of the 3 main slopes, or host private dinners with a dedicated Chef...

All topped with the perfect relaxation or rejuvenation at our exclusive Bellefontaine Spa by Grandes Alpes...

GRANDES ALPES

COURCHEVEL 1850

HOW TO BOOK

Address

Grandes Alpes
28 Rue de l'Eglise - BP 1
73120 Courchevel 1850, France
Tel: +33 (0) 4 79 00 00 00
Fax: +33 (0) 4 79 08 12 52
Email: contact@grandesalpes.com
Web: www.grandesalpes.com

General Manager

Mr Yuri Logvinenko

Contact :

Ms Orianne Laude

Reservations Manager

Email: contact@grandesalpes.com
Tel: +33 (0) 4 79 00 00 00

- Grandes Alpes Private Hotel in the heart of Courchevel won the 5 Star Diamond Award in 2013
- The 3 Valleys ski area is an exceptional, internationally renowned playground for the ski lovers. It is simply the biggest interconnected ski area in the world
- SW 1850
After opening only 3 months ago, Chef Sylvestre Wahid's restaurant Sylvestre has received its first Michelin star.
Unique gastronomic experience at altitude. Only the best products at the best time.
He also delight Grandes Alpes guests with a dedicated room service, inspired of the essence of French cuisine.
An invitation to travel through the dishes!
- Be in the heart of the resort, with immediate access to the most attractive brands right below the hotel and a unique ski-in and ski-out location, you will explore directly from one of the 3 main slopes.
- The Bellini's Lounge Bar, the perfect place to relax listening to live music, whilst sipping Champagne cocktails.
- Our Spa Bellefontaine where you can immerse yourself in a deep world of sensuality and sensation in the knowledge that you're in good hands and experience unforgettable moments of health, beauty and well-being.
- Our Ski Shop, l'Atelier with skis by Zai, pays tribute to fashion and top quality products — The shop offers ski clothing, shoes, and accessories.

HOW TO GET THERE

BY CAR

From :

- Moûtiers: 25 km (0h30)
- Chambéry: 110 km (1h20)
- Genève: 149 km (2h15)
- Lyon: 187 km (2h00)
- Nice: 550 km (5h00)
- Paris: 600 km (5h30)

BY TAXI

Please contact us for any information or bookings.

BY AIR

From international airports

- Chambéry / Aix-les-Bains International airport (110 km)
Tel. +33 (0)4 79 54 49 54 - www.chambery-airport.com
- Genève Cointrin International airport (149 km)
Flights information - Tel. 0041 900 57 15 00
Accueil France - Tel. 0041 22 798 2000
www.gva.ch
- Lyon St Exupery International airport (187 km)
Tel. +33(0)4 26 007 007 - www.lyon.aeroport.fr
- Grenoble Airport International airport (130 km)
Tel. +33 (0)4 76 65 48 48 - www.grenoble-airport.com

BY HELICOPTER

Enjoy our exclusive private helicopter transfers. We are able to organise transfers from Geneva, Lyon, Grenoble and other selected airports.
Please contact us for any information or bookings.

BY TRAIN

- From Paris
The TGV takes 4 hours to Moûtiers Tarentaise Station. From here you can transfer either by bus or by taxi.
More information, tel.: 00 33 (0)8 92 35 35 35 or check the SNCF website.
- From Chambéry
Tel.: 00 33 (0)8 20 22 74 14 - website
- From Geneva
Tel.: 00 41 22 798 2000 - website
- From Lyon
Tel.: 00 33 (0)4 79 68 32 96 - website

GRANDES ALPES

★★★★★
COURCHEVEL 1850

FACTS

Activities

Alpine skiing, cross-country skiing, ski touring, heli-skiing, snowshoeing, snowboarding, ice skating, sledding, snow bike, paragliding, carriage rides, hot air balloon.

Airport transfers

Airport transfers with private chauffeur, helicopters transfers can be arranged by the Hotel with additional charges, prior booking required.

Babysitting

Available on request with extra cost.

Check-in/ Check-out Time

The apartments are available from 4pm on the arrival day and guest are asked to vacate their apartments by 12pm on the departure day. Subject to availability, rooms may be kept on for late departures. Please check with reception. The above policy applies to any room move.

Children

Children of all ages are welcome.

Concierge Services

Full concierge services are offered at Grandes Alpes and the following is a selection of what is available for guests:

Reservations for Wellbeing Treatments, Ski instructors, Restaurants and nightlife, Taxis, Helicopters, Flights, Shopping advice, Gifts and special occasion, Baby-Sitting, What's on in Courchevel and in its surrounding. Shuttle Service (available only in Courchevel 1850), Taxis, Helicopters, Flights and much more.

Credit Cards

The Hotel accepts American Express, Visa and Master Card.



GRANDES ALPES

★★★★★
COURCHEVEL 1850

HOTEL AND SPORT FACILITIES

Bellini's Lounge Bar

Located on the ground floor, the Bellini's Bar is open from 10 am to 1 am.

Health & Beauty Centre

"Les Grandes Alpes" invites you to relax with a personalized visit to our Bellefontaine Spa. Here you can restore and rebalance your spirit and body. Bellefontaine Spa is open every day from 10.00am to 8.00pm.



Swimming-Pool/Sauna/Hammam

is open every day from 10.00am to 8.00pm.

Fitness Room

Our Fitness Room is open 24hours a day

Ski Shop

Our Ski shop is open every day from 08.45 to 6.00pm.

In Suite well-being services

Massage and other beauty treatments are available in guests' suite, offered as part of the hotel's concierge services.

Rates and terms

Please contact our Reservations Department.

Room Service and Butler Service

Available 24 hours a day.

ACCOMMODATION

Prestigious apartment and Suites

Apartment with 3 bedrooms, ranging from 142 to 160 sqm²: Jade - Amethyst - Beryl - Onyx.

- Apartment with 4 bedrooms, ranging from 175 to 300 sqm²: Serpentine - Ruby Duplex - Emerald
- Two Bedroom Suite: ranging from 130 to 260 sqm²
- One Bedroom Suite: ranging from 100 to 125 sqm²
- Deluxe Room: ranging from 25 to 30 sqm²

Facilities in each apartment

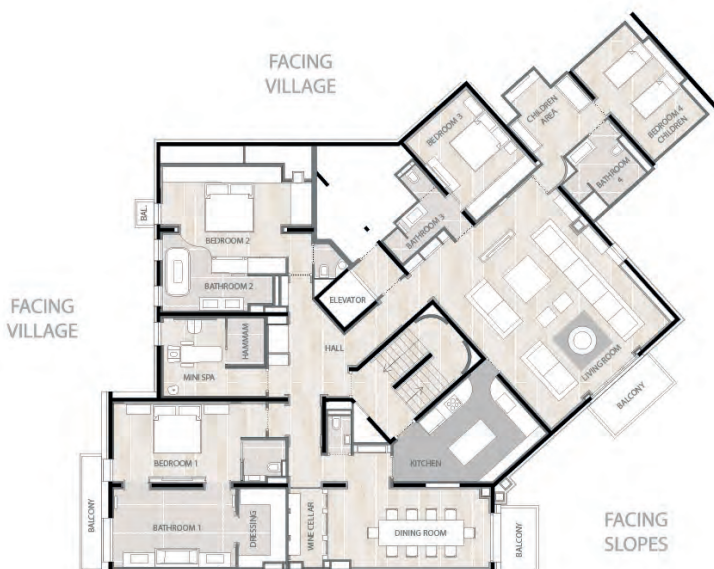
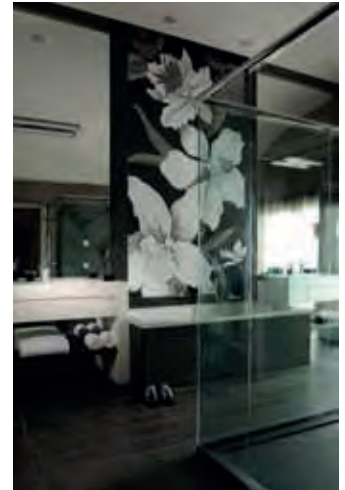
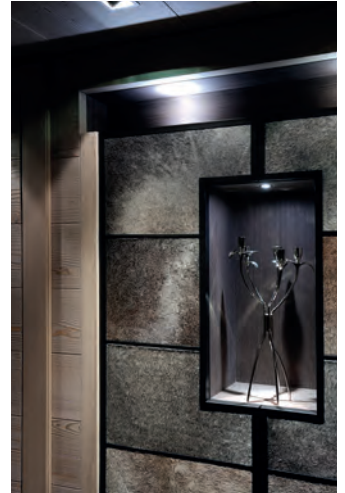
Direct Dial telephone, In-Room safe with digital code, Hair dryer, Satellite TV, DVD and CD player, Apple TV, Wifi.



GRANDES ALPES

★★★★★
COURCHEVEL 1850

Emerald Suite 300 m²



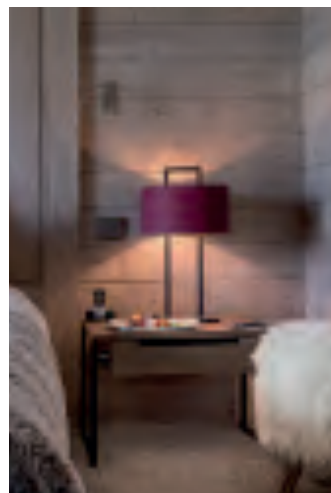
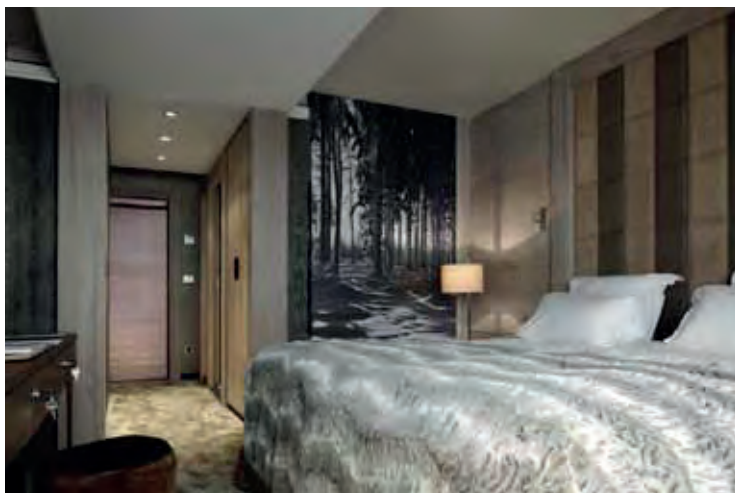
Living room with fireplace.
Dining room with wine cellar
Professional kitchen
4 en-suite bedrooms including 1 master bedroom
(44 sq. m.), massage area & steam room,
playing room & private lift
Covers the entire 4th floor, consisting of an
exceptionnal south facing living room with
fireplace and view over the slopes, private lift
access, hammam, games room, large dining
room also south facing, professional kitchen and
wine cellar, with 4 en-suite bedrooms (including
a 44 m² master bedroom with large bathroom,
dressing room and stunning views over the
valley)

GRANDES
ALPES

★★★★★
COURCHEVEL 1850

Serpentine Suite

175 m²



Living room with fireplace.
Dining room
Professional kitchen
Wine cellar
4 en-suite bedrooms

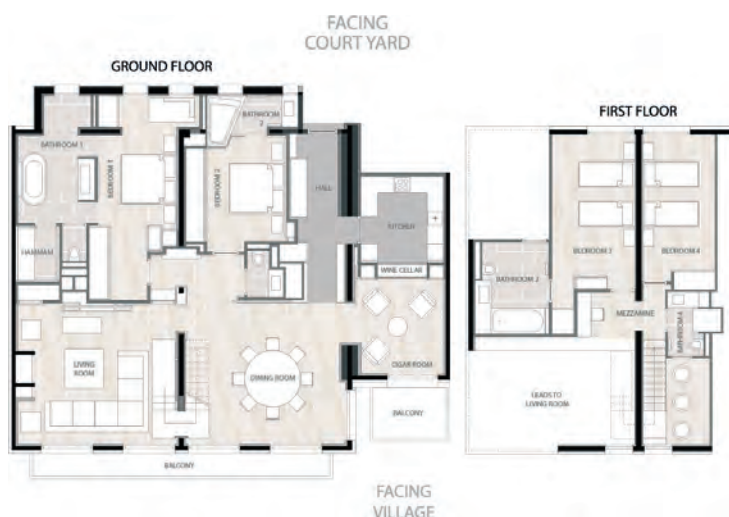
Located on the 3rd floor, consisting of a south facing living room and view over the slopes, large dining room, professional kitchen, wine cellar and 4 en-suite bedrooms

GRANDES ALPES

★★★★★
COURCHEVEL 1850

Ruby Suite

210 m² - duplex



Living room with fireplace.
Dining room
Professional kitchen
Wine cellar
4 en-suite bedrooms including master bedroom with steam room
Smoking room

Located on the 2nd floor, consisting of a very large open plan dining room, living room with fireplace and view over the valley and the village, smoking room, professional kitchen, wine cellar (including master bedroom with hammam) and 2 more upstairs on the 2nd level.

GRANDES
ALPES

★★★★★
COURCHEVEL 1850

Amethyst Suite

160 m²



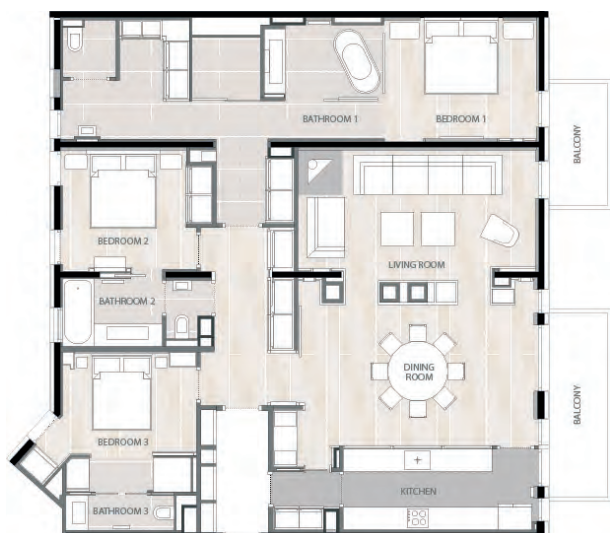
Living room with fireplace.
40 sq. m. terrace with private hot tub
Dining room
Professional kitchen
Wine cellar

Situated on the 1st floor, consisting of a very large open plan dining room and living room with fireplace, both south facing with view over the slopes, professional kitchen, wine cellar, 3 en-suite bedrooms (including a 43 m² master bedroom, also south facing) and large terrace balcony with a private outdoor hot tub

GRANDES ALPES

★★★★★
COURCHEVEL 1850

Onyx Suite 160 m²



Living room with fireplace.

Dining room

Professional kitchen

Wine cellar

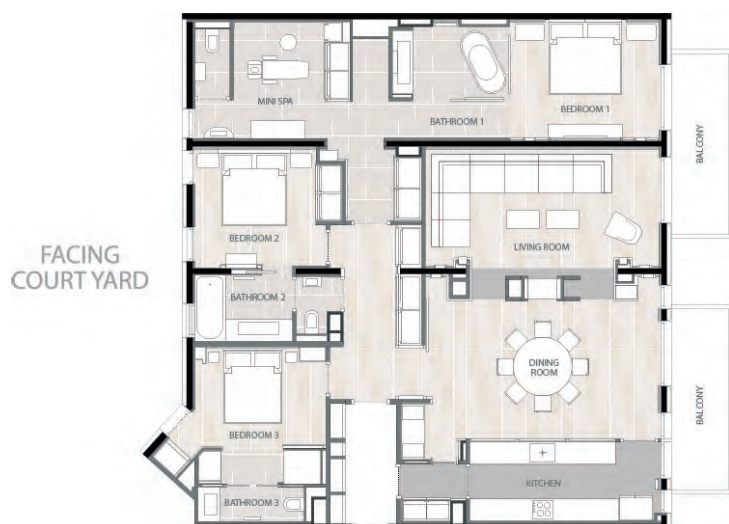
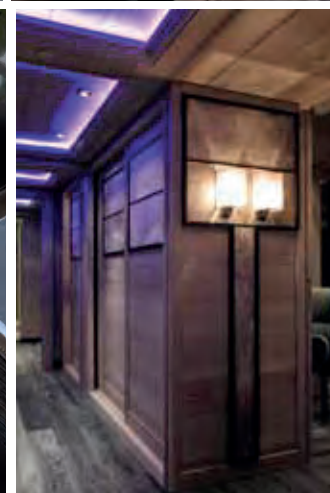
3 en-suite bedrooms including 43 sq. m.
master bedroom

Situated on the 3rd floor, consisting of a very large open plan dining room and living room with fireplace, both south facing with view over the slopes, professional kitchen, wine cellar and 3 en-suite bedrooms (including a 43 m² master bedroom, also south facing).

GRANDES ALPES

★★★★★
COURCHEVEL 1850

Beryl Suite 160 m²

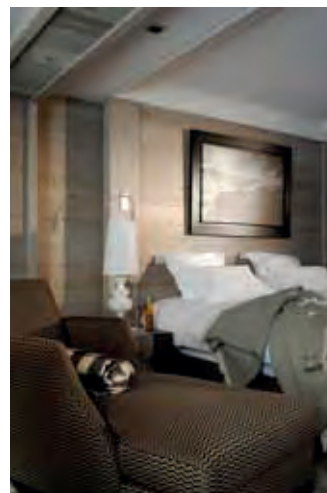
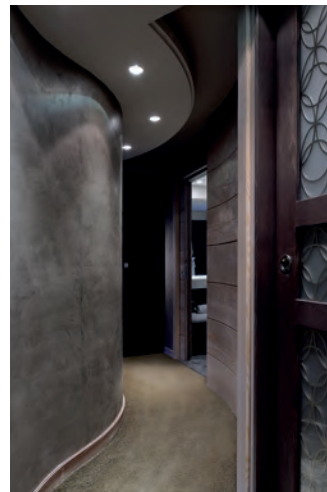


Living room with fireplace.
Dining room
Professional kitchen
Wine cellar
3 en-suite bedrooms including 43 sq. m.
master bedroom

Located on the 2nd floor, consisting of a very large open plan dining room and living room with fireplace, both south facing with view over the slopes, professional kitchen, wine cellar and 3 en-suite bedrooms (including a 43 m² master bedroom massage area, also south facing)

★ ★ ★ ★ ★
COURCHEVEL 1850

JadeSuite



Living room with fireplace.
Dining room
Professional kitchen
Wine cellar
3 en-suite bedrooms

Situated on the 1st floor, consisting of a dining room, large living room with fireplace, with a view over the village and valley, professional kitchen, wine cellar and 3 spacious en-suite bedrooms.

Two Bedroom 243 m² Penthouse Suite



Large living room with Fireplace
Dining room with wine cellar
Professional kitchen
Two en-suite bedrooms including 1 master bedroom 44 sqm
Massage area & stream room
Private lift.

Covers the entire 4th floor, consisting of an exceptional south facing living room with fireplace and view over the slopes, private lift access, hammam, playing room, large dining room also south facing, professional kitchen and wine cellar with two en-suite bedrooms including a 44 m² master bedroom with large bathroom, dressing room and a stunning view over the valley.

GRANDES ALPES

★★★★★
COURCHEVEL 1850

Two Bedroom 170 m² Ruby



- Living room with Fireplace
- Dining room
- Professional kitchen
- Wine cellar
- Two en-suite bedrooms

Located on the second floor
Consisting of a south facing living room with fireplace and view over the slopes, large dining room, professional kitchen wine cellar and two en suite bedrooms, including a master bedroom with steam room.
Smoking room

GRANDES ALPES

★★★★★
COURCHEVEL 1850

Two Bedroom 130 m² Suite



Living room with Fireplace
Dining room
Professional kitchen
Wine cellar
Two en-suite bedrooms

Located on the 1st, 2nd or 3rd floor.
Consisting of a south facing living room with fireplace and view over the slopes, large dining room, professional kitchen wine cellar and two en-suite bedrooms.

GRANDES
ALPES

★★★★★
COURCHEVEL 1850

One Bedroom

125 m² Prestige Suite



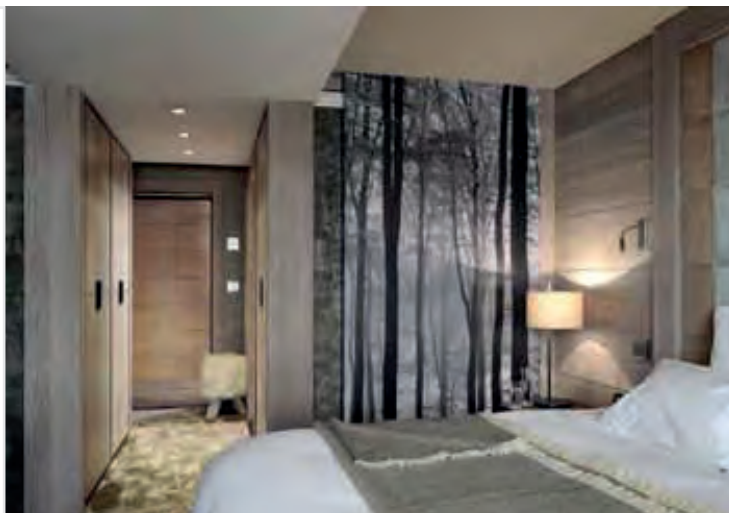
Living room with Fireplace
Dining room
Professional kitchen
Wine cellar
One en-suite bedroom of 43 sqm

Located on the 1st, 2nd , 3rd floor
Consisting of a very large open dining room
and living room with fireplace,
both south facing with view over the slopes,
professional kitchen, wine cellar and a
One en-suite bedroom of 43 sqm

GRANDES ALPES

★★★★★
COURCHEVEL 1850

One Bedroom 100 m² Suite



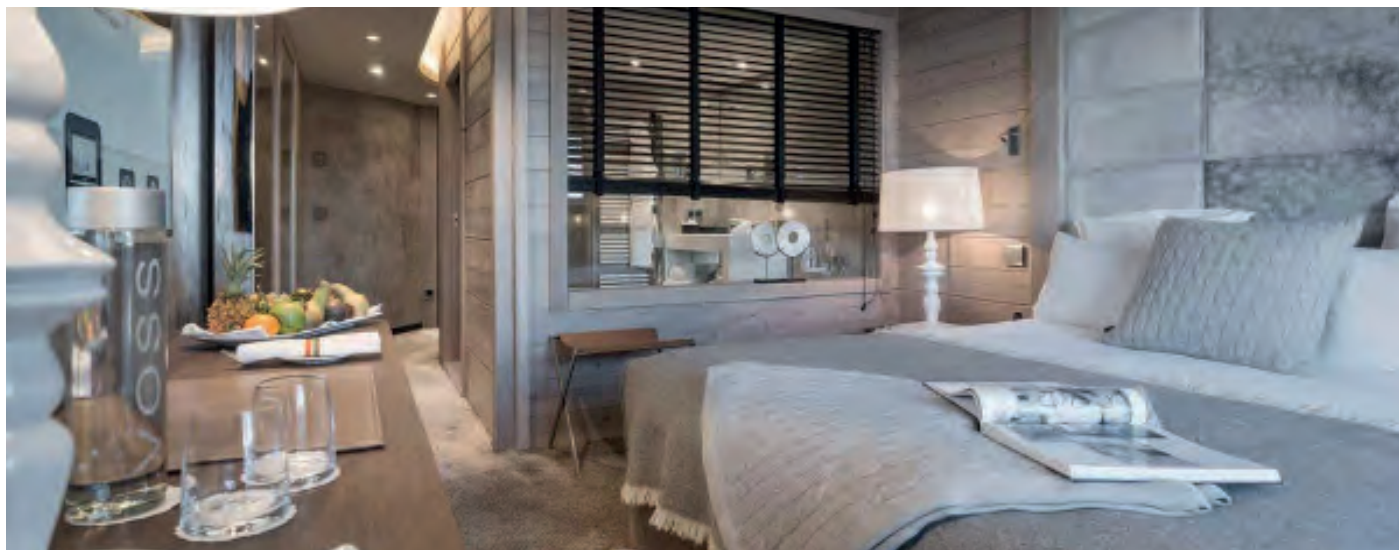
Living room with fireplace
Dining room
Professional kitchen
Wine cellar
One en-suite bedroom

Located on the 1st, 2nd or 3rd floor consisting of a south facing living room with fireplace and view over the slopes, large dining room, professional kitchen and wine cellar with one en-suite bedroom

GRANDES ALPES

★★★★★
COURCHEVEL 1850

Deluxe 30 m² Prestige room



Surface 30 sqm

The Deluxe rooms are comfortably equipped with a large bed, bathroom, free wifi internet access, flat TV, Apple TV system and mini bar.

View overlooking the village and the valley.

Featuring a cozy atmosphere, while wood essences, exclusive patterns, sensual textures contribute to a unique style.

FACING
VILLAGE



GRANDES ALPES

★★★★★
COURCHEVEL 1850

Deluxe 25 m² Room



Surface 25 sqm

The Deluxe rooms are comfortably equipped with a large bed or two individual beds, bathroom with shower, free wifi internet access, flat TV, Apple TV system and mini bar.

View overlooking the village and the valley.

Featuring a cozy atmosphere, while wood essences, exclusive patterns, sensual textures contribute to a unique style.

GRANDES ALPES



COURCHEVEL 1850

Grandes Alpes

BP 1 - Rue de l'Eglise - 73120 Courchevel 1850 | Tel : +33 (0) 4 79 00 00 00
contact@grandesalpes.com | www.grandesalpes.com