



Annobelle







# DISCOVER

Annabelle connects guests to the best of Cyprus, from Paphos's world famous mosaics to world-class sailing, diving, trekking and golf. Enjoy wine-tasting at Chrysorroyiatissa Monastery and a host of regional wineries; bread-making demonstrations at Kouyiouka Watermill and horseriding and jeep excursions in the Akamas National Park.







### **The land of myth and magic**

Paphos is surrounded by fascinating archaeological sites, like the beautiful Sanctuary of Apollo Hylates, near the ancient town of Kourion.



### **A cultural oasis**

Visit vineyards, national parks and historical attractions like the Panagia Chrysorrogiatissa Monastery, which has beautiful 300-year-old frescoes.



# STAY

Opened in 1985 by George Thomas, Viscount Tonypandy, the Annabelle was the first five-star hotel in Paphos, and this iconic Mediterranean hotel is now considered the 'grande dame' of Cypriot resorts.











The hotel's fiercely loyal guests are testament to the beauty of the hotel's setting and soulful charm of its staff which keep people coming back for more.

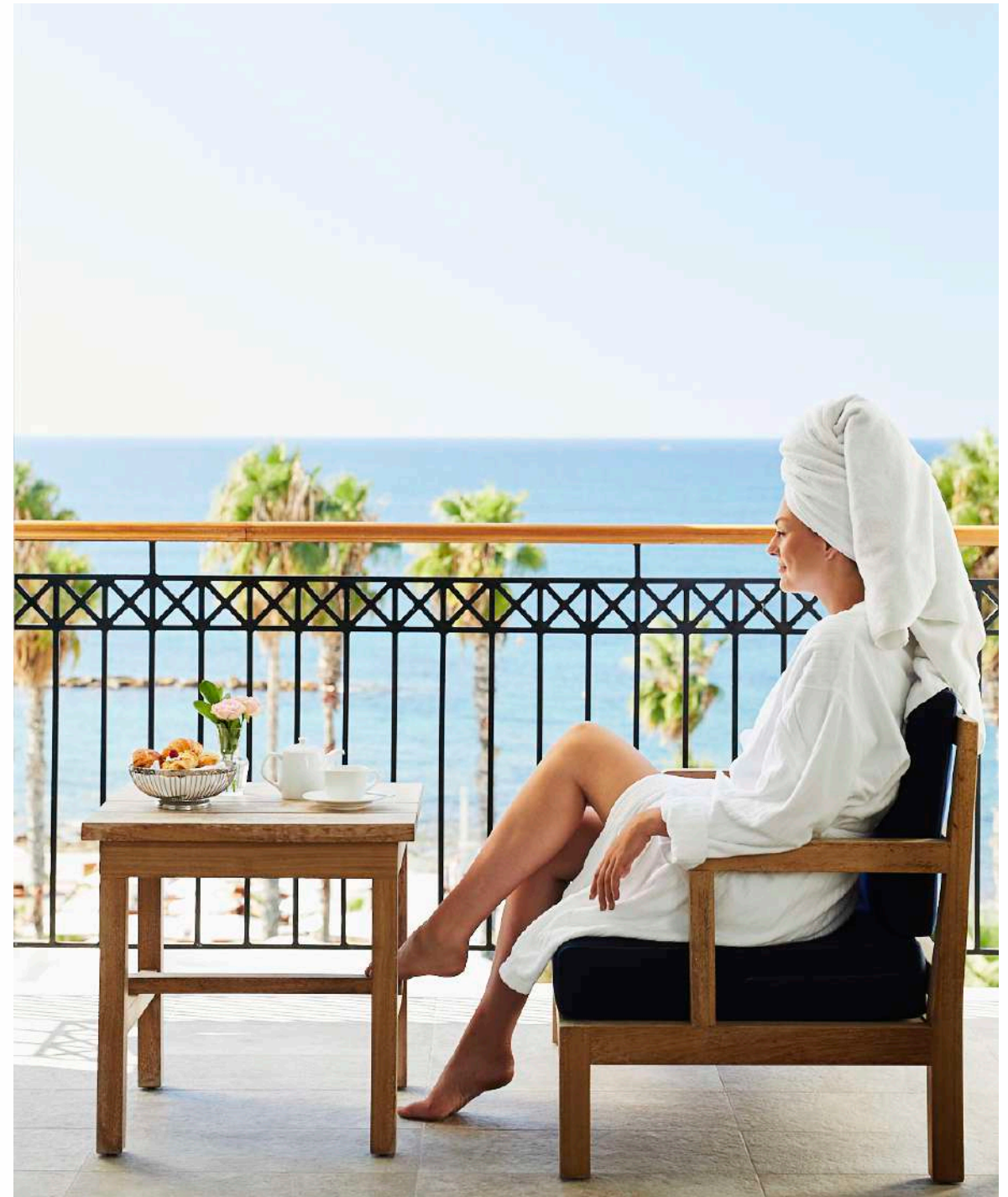


The recently refurbished hotel is a home-from-home for many and thanks to its spectacular setting in serene sea-front gardens it is a perfect year-round holiday spot.

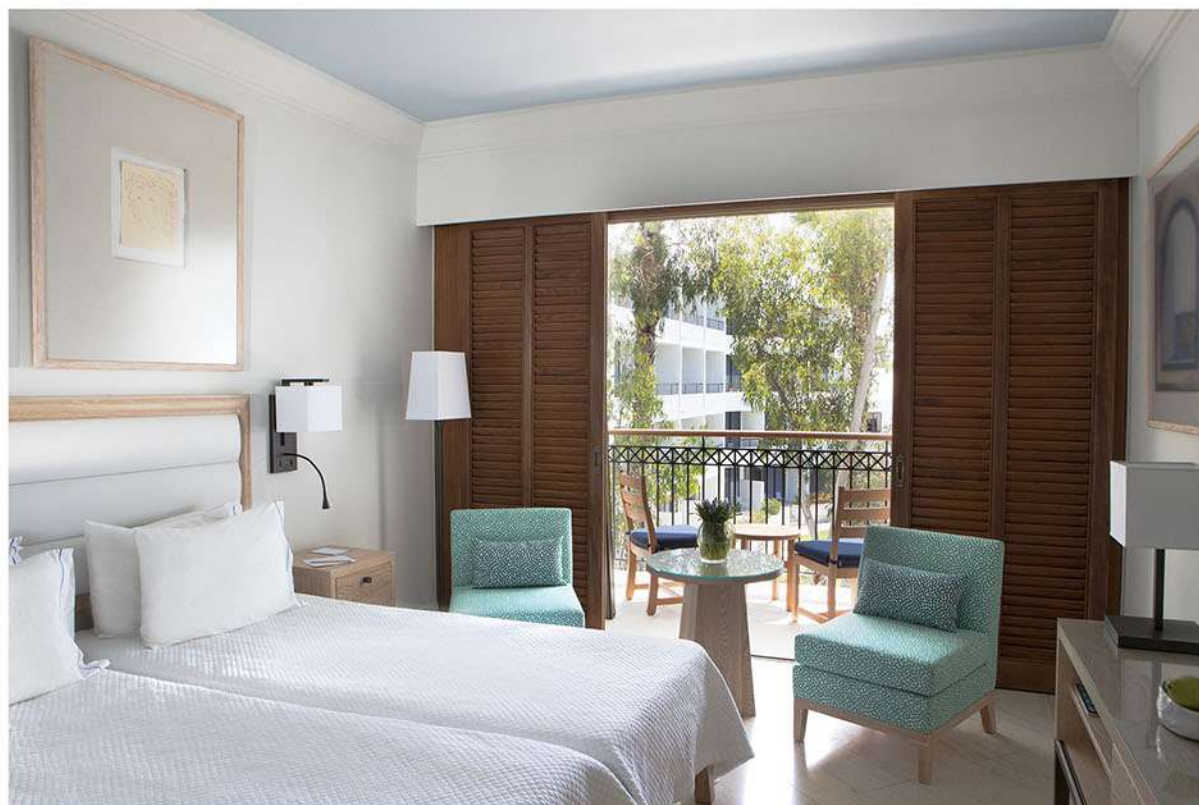


# DREAM

Discover the art of languid living in 244 contemporary rooms and suites set in six acres of sub-tropical seafront gardens just a short walk from historic Paphos harbour. Airy interiors have a colonial charm and air of easy elegance

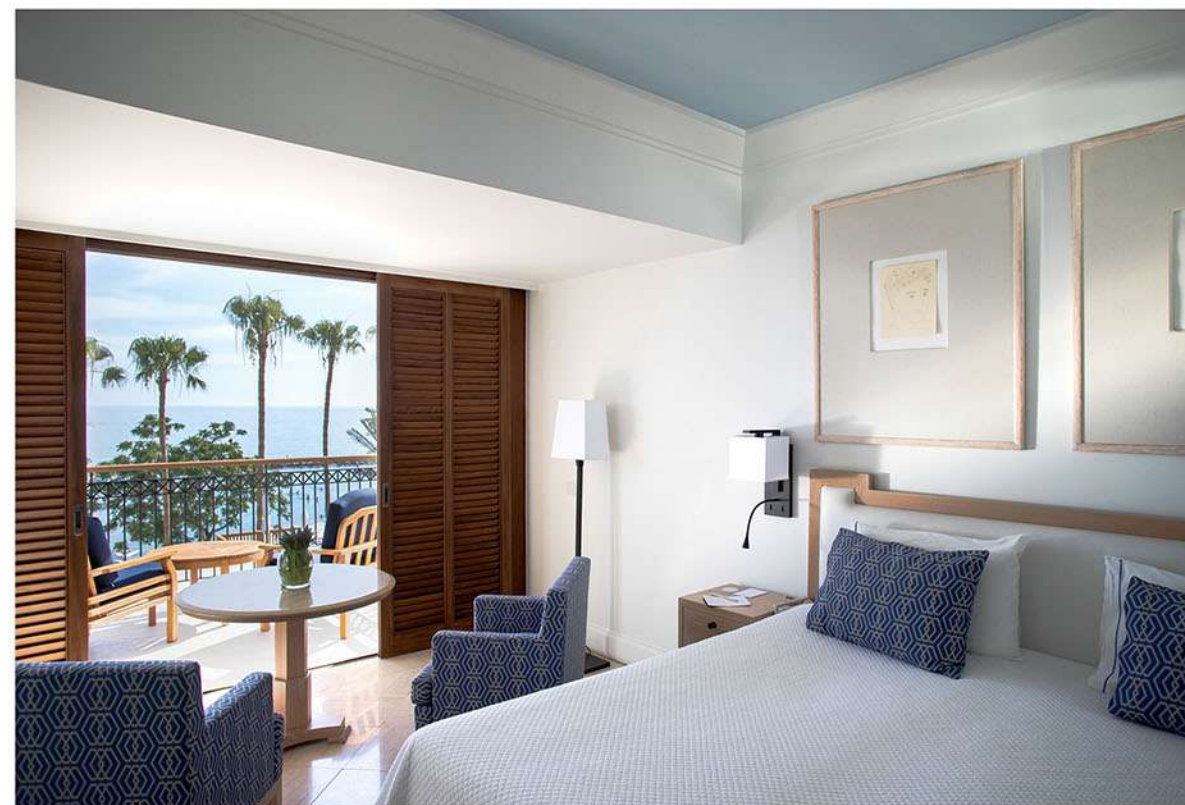






### **Inland View**

Ease into languid elegance with our generous entry level rooms complete with artisan furniture, cooling marble floors and classical marble bathroom. Relax on your balcony with views towards the historic Paphos or Annabelle's lush grounds.



### **Inland View**

Thoughtfully designed with the sea in mind, these spacious rooms feature cool marble flooring that bare feet will love and step-out balconies from which to savour the changing colours of the Mediterranean.





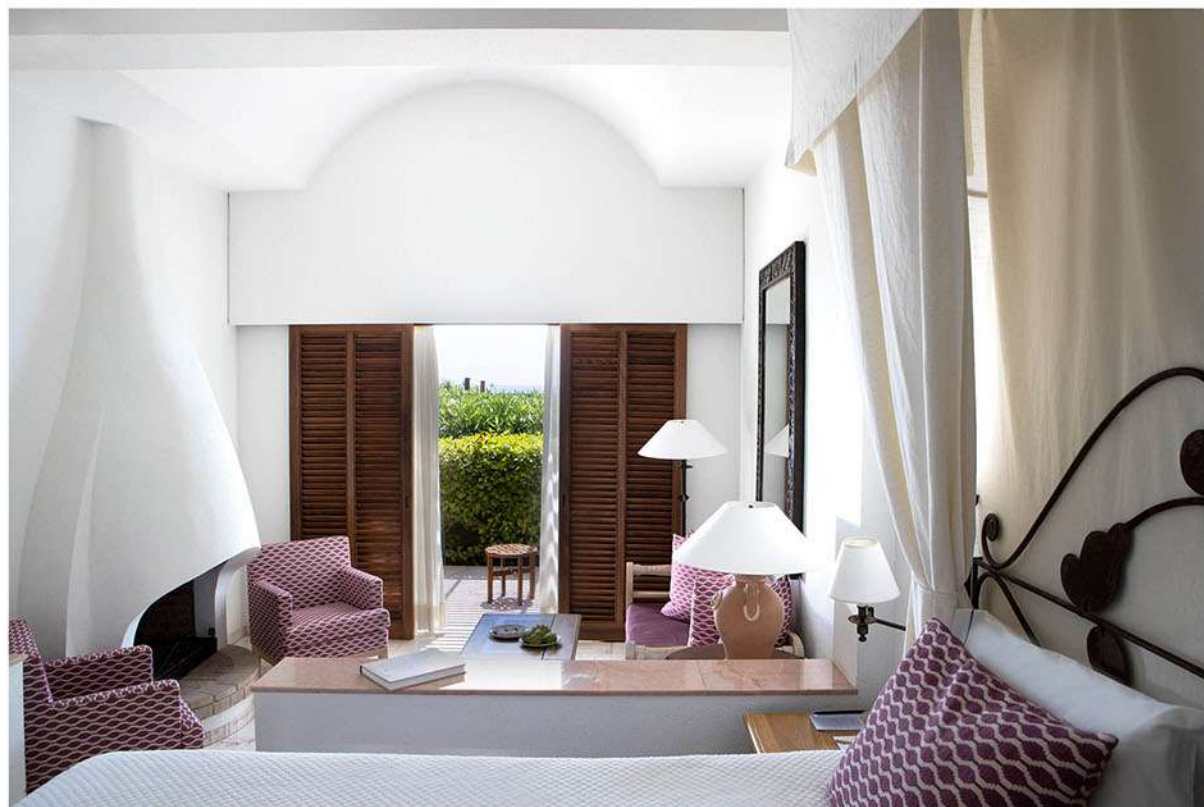
Terrace Sea View



Panorama Sea View







### **Garden Studio Suite**

Classically Greek, these lovely suites for two comprise a serene open-plan bedroom and living room. Views open onto verdant palms, pretty red hibiscus flowers and relaxing waterfalls from two private patios; some suites come with a cosy fireplace. The marble bathroom has recently been refitted with walk-in showers.



### **Studio Suite Sea View**

Located on the first floor of Annabelle - and looking out to the big blue expanse and Paphos harbour - these bright, airy suites feature an open-plan bedroom and living room with bespoke furniture and light-flooded marble bathrooms with walk-in showers.



Studio Suite with Plunge Pool





Panorama Superior Suite

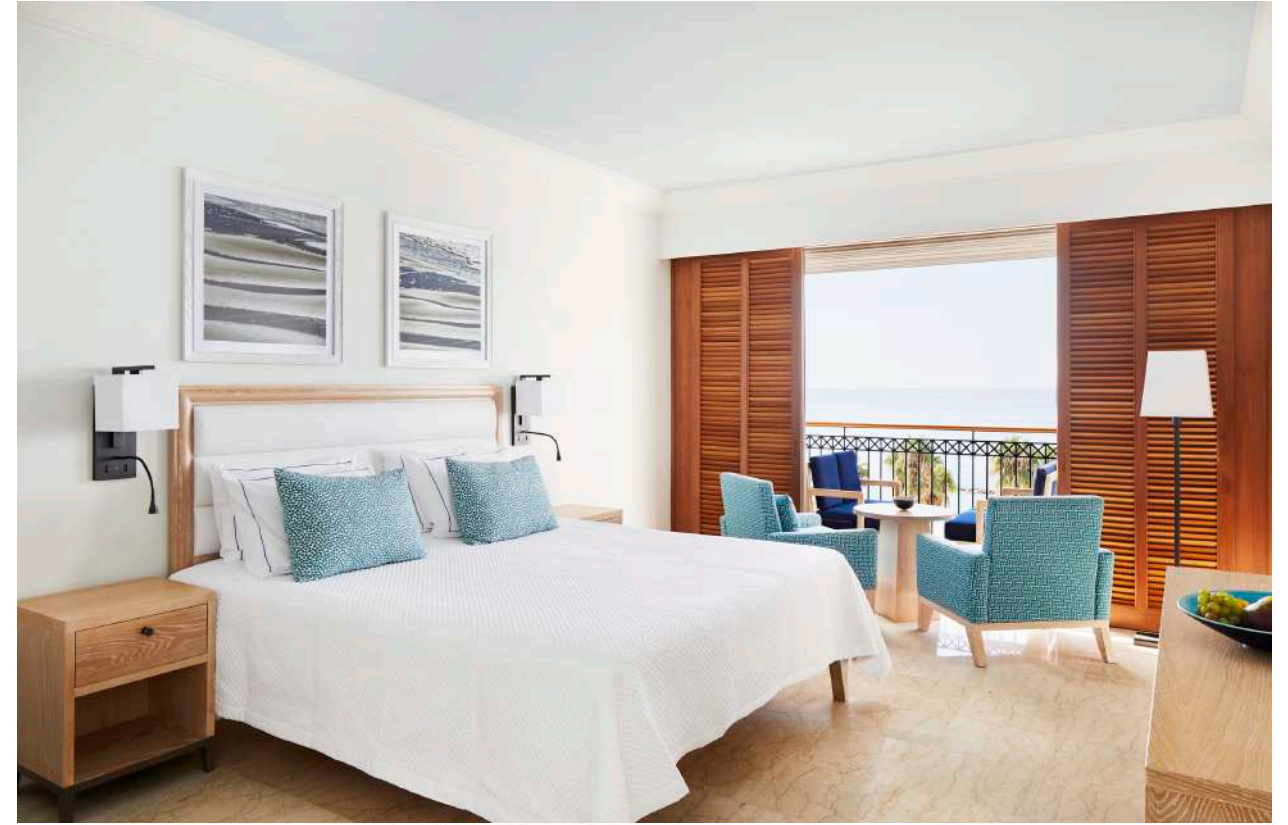






### **Karyatis Sea View Suite**

Newly opened in May 2018, these duplex suites, in true Annabelle style, reflect the hotel's colonial-chic charm coupled with a contemporary twist. Enjoying spectacular sea views, each suite has 2 extensive balconies, a 49m<sup>2</sup> living room on the ground floor and a 31m<sup>2</sup> bedroom on the first floor.



Cool white walls and Mediterranean-hued fabrics complement the custom-made wooden furnishings and traditional shuttered doors. The spacious bathroom has separate shower, large bathtub, double wash basin and a separate WC.



One Bedroom Deluxe Suite







### **Alecos Two Bedroom Suite**

This mighty jewel in our Cypriot crown has a vast balcony with uninterrupted vistas of our colourful gardens, Paphos harbour, and the mesmerising Mediterranean. An impressive entrance leads to a refined living-come-dining room with unique colonial styling, locally crafted furniture and a private bar.



Light floods into the marble-floored bathroom from a glass roof onto an indoor whirlpool with exceptional seascape views and a walk-in shower. The balcony will make it hard to leave... Available with either one or two exceptional en suite bedrooms



# DINE

Our 'Food from the Village' approach guarantees the finest local produce across a range of inspired menus. Live music and dancing add a touch of Cypriot flair, while creative bars invite you to kick back, connect or dream over a drink or afternoon tea.

























# DRINK

From statement cocktails and gourmet nibbles to refreshing poolside drinks or elegant afternoon refreshments in a chic colonial setting, the Annabelle offers a variety of different settings to choose from, whatever your mood.





Amorosa Terrace







### **Byz Bar**

Enjoy a rich melange of ambient tunes, signature Zivania cocktails and wonderfully relaxed evening entertainment.







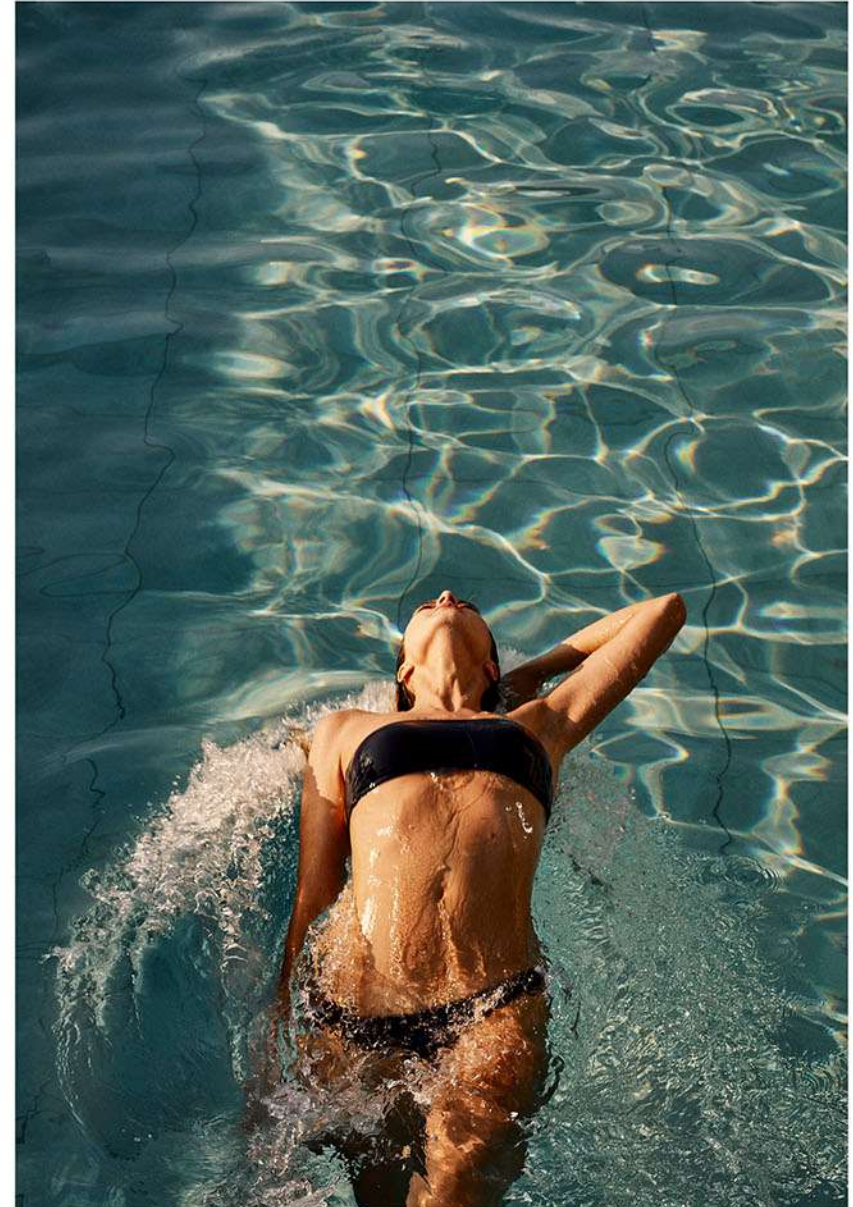
Ouranos Lounge Bar





# RELAX

For the first time in its 30-year history, the hotel will be home to a new state-of-the-art wellness centre where guests can relax, recharge and rejuvenate. The Ouranos Wellbeing Spa (Ouranos means 'sky' or 'heaven') will be located on the top floor of the hotel, from where visitors can enjoy spectacular views of Paphos Bay.













# PLAY

There's so much to do in and around Paphos,  
from sailing and diving to hiking and golf. The Annabelle  
is perfectly placed to make the most of everything  
this fabulous region has to offer.

















# FACT SHEET

Annabelle

## FACT SHEET

MANAGEMENT/ OWNERS:	Thanos Hotels & Resorts
HOTEL MANAGER:	Razvan Bordea
ARCHITECT:	Agathi Kleanthous Bellos
INTERIOR DESIGNER:	Joelle Pléot, Paris, France
CATEGORY:	Five Star, Member of Preferred Hotels & Resorts
ADDRESS:	Poseidonos Avenue, 8042 Pafos, Cyprus
POSTAL ADDRESS:	PO Box 60401, CY-8102 Pafos, Cyprus
TEL NO:	+ (357) 26 885 000
E-MAIL:	annabelle@thanoshotels.com
WEBSITE:	<a href="http://www.annabelle.com.cy">www.annabelle.com.cy</a>
OPENING DATE:	July 1985, opened by Viscount Tonypany
NO. OF ROOMS:	244
AMENITIES:	Free WiFi; 24-hour room service; laundry/dry cleaning; twice-daily maid service; minibar and safe in all rooms.
LOCATION:	Set within six acres of tropical seafront gardens in a prime position on the promenade of UNESCO-listed Pafos just a short walk from the scenic harbour, medieval castle, Roman ruins and world-famous mosaics.
ACCESSIBILITY:	20min drive from Pafos Intl. Airport (17km) 90min drive from Larnaca Intl. Airport (136km)
CONCEPT:	Enduring in quality and intuitive in service, Annabelle is both stylishly inviting and wonderfully familiar: a hallmark of a true heritage classic. The grande dame of Pafos, Annabelle is renowned for her colonial charm, soulful 'from-the-heart' staff, and relaxed elegance.



Poseidonos Avenue, 8042 Pafos, CYPRUS, Tel +357 26 885 000, Fax +357 26 945 502  
annabelle@thanoshotels.com, [www.annabelle.com.cy](http://www.annabelle.com.cy), [www.thanoshotels.com](http://www.thanoshotels.com)





**LEISURE FACILITIES:**

"A place to feel at home while immersing in rich Cypriot history"

- Impressive tropical gardens
- New indoor rooftop pool, bar, restaurant and wellness centre (Ouranos)
- Tennis court, squash court, gym
- Three outdoor freshwater swimming pools with cascading waterfalls and swim-in grotto
- Agape Terrace and Athenaeum Ballroom
- Water sports including scuba diving available through third parties
- Signing privileges at neighbouring sister-hotel, Almyra
- Four golf courses within easy reach

**OURANOS  
WELLBEING SPA:**

A rooftop retreat of heightened tranquillity, named after the Greek god of the sky and the heavens; 4 rooms showcasing treatments by 'beyond organic' ila, marine-based OSEA and QMS Medicosmetics; pool; sauna; gym; personal training and fitness classes.

**RESTAURANTS:**

Annabelle's 'Food from the Village' culinary pedigree celebrates the finest regionally harvested produce across five distinctive venues:

- **Asteras:** intimate and innovative gourmet dining at candlelit tables overlooking the illuminated water gardens.
- **Fontana:** relaxed international buffet breakfast and dinner.
- **Amorosa:** sophisticated Modern European fine-dining with beautiful views over the pools, gardens and sea.
- **Mediterraneo:** al fresco meze at the water's edge.
- **Ouranos:** rooftop restaurant and bar for creative sharing plates, salads and Afternoon Tea.

**BARS:**

Pool Bar; Grotto Bar; Byz Bar; Mediterraneo Bar; Ouranos Bar.

**ENTERTAINMENT:**

Live music, BBQs and theme nights.

**EXCURSIONS:**

Nearby sailing, diving, trekking, golf and cultural excursions like wine-tasting at Chrysoroyiatissa Monastery, bread-making at Kouyiouka Watermill, horse-riding, and jeep trips in Akamas National Park.

**CHILDREN'S FACILITIES:**

Multi-award winning Explorers Children's Club (4 months to 12 years) available at adjacent sister-hotel, Almyra (from April to October):

- Globetrotters 4 months to 2 years
- Adventurers 3 to 4 years
- Voyagers 5 to 7 years
- Pioneers 8 to 12 years

Babysitting and children's meals upon request. In-room baby items available for pre-order with the 'Baby Go Lightly' service.

**SHOPPING:**

Kult Boutique selling designer brands including Melissa Odabash, Heidi Klein and Acqua Di Parma.



Poseidonos Avenue, 8042 Pafos, CYPRUS, Tel +357 26 885 000, Fax +357 26 945 502  
annabelle@thanoshotels.com, www.annabelle.com.cy, www.thanoshotels.com

**ACCOMMODATION:**

April 2018 saw the end of Annabelle's €10 million, 2-year transformation, including the addition of 26 new rooftop rooms. Exuding a contemporary colonial charm, all rooms have a balcony or terrace, en suite marble bathroom, cool white walls, Mediterranean-hued fabrics, artisan Cypriot furniture and traditional shuttered doors. Most also feature magnificent sea views across the bay to Pafos harbour.

**ROOMS**

- **Inland View Room** (24m<sup>2</sup>): Artisan furniture, balcony, and an air of easy elegance.
- **Terrace Garden View Room** (24m<sup>2</sup>): Ground floor rooms plus terrace with sun lounger.
- **Side Sea View Room** (24m<sup>2</sup>): Spacious rooms with step-out balconies.
- **Sea View Room** (28m<sup>2</sup>): Spacious rooms with step-out balconies and gorgeous views.
- **Terrace Sea View Room** (26m<sup>2</sup>): Ground floor rooms with terrace and ocean views.
- **Deluxe Sea Facing Room** (30m<sup>2</sup>): Bright, airy rooms with a spacious 8m<sup>2</sup> balcony.
- **Family Studio** (35m<sup>2</sup>): Ground floor garden studios with 9m<sup>2</sup> terrace.

Connecting Inland View Rooms and connecting Sea View Rooms are also available.

**SUITES**

- **Garden Studio Suite with Whirlpool** (35m<sup>2</sup>): Garden gems that open onto a terrace.
- **Studio Suite with Private Plunge Pool** (35m<sup>2</sup>): Ground floor; large terrace; sea-view pool.
- **Superior Suite** (55 m<sup>2</sup>): Large living room, dining space and balcony or terrace.
- **Panoramic Sea View Suite** (28m<sup>2</sup>): Top floor sea views; next to Ouranos Spa and lounge.
- **Karyatis Suite** (45 m<sup>2</sup>): Top floor duplex suites with panoramic sea views.
- **One Bedroom Deluxe Suite** (60m<sup>2</sup>): Spacious sea-view suite plus balcony with loungers.
- **Two Bedroom Deluxe Suite** (88m<sup>2</sup>): Dreamy suites for up to 6 plus balcony with loungers.
- **Artemis Suite** (40m<sup>2</sup> plus 27m<sup>2</sup> terrace): A majestic garden suite with far-reaching sea views, private terrace with heated whirlpool, open-plan bedroom and living room and vast sunlit bathroom with outdoor rain shower.
- **Alecos Two Bedroom Penthouse** (95m<sup>2</sup> plus terrace): An impressive entrance, refined living-come-dining room, unique colonial styling and large terrace. The marble bathroom has a glass roof and indoor whirlpool.



Poseidonos Avenue, 8042 Pafos, CYPRUS, Tel +357 26 885 000, Fax +357 26 945 502  
annabelle@thanoshotels.com, www.annabelle.com.cy, www.thanoshotels.com





A N A S S A



### The Ultimate Mediterranean Retreat

P.O. Box 66006  
8830 Polis, Cyprus  
T+ (357)26888000  
F+ (357)26322900  
anassa@thanoshotels.com  
www.anassa.com



almyra



### The Taste of The Sea

P.O. Box 60136  
8125 Pafos, Cyprus  
T+ (357)26888700  
F+ (357)26942818  
almyra@thanoshotels.com  
www.almyra.com

Annabelle

P.O. Box 60136  
8125 Pafos, Cyprus  
T+ (357)26885000  
F+ (357)26945502  
annabelle@thanoshotels.com  
www.annabelle.com.cy

LIFESTYLE™  
*Preferred*  
HOTELS & RESORTS

### Thanos Hotels

P.O. Box 60136  
8125 Pafos, Cyprus  
T+ (357)26888714  
F+ (357)26931656  
info@thanoshotels.com  
www.thanoshotels.com